

FOR SALE



#Solar Home, Crimson Park

Price: USD 299,000

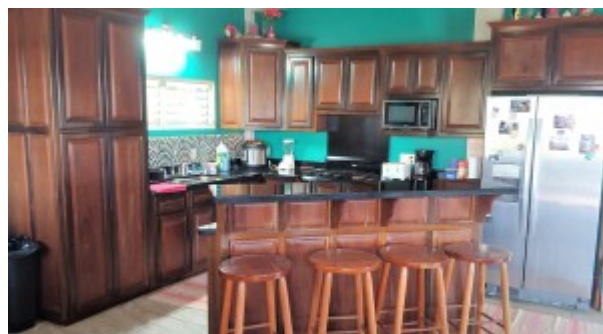
MLS Number: H1005

Location: Stann Creek District

Lot size: 0.10 Acre

Bedrooms: 3

Solid concrete, well built, solar home in quiet area close to the highly sought Placencia Village. Easy walk, golf cart or bike ride to village. Strong rental history due to ease of location for those owners that want to come every so often or maybe not retiring for a few years. Beautiful Maya mountain views, close to lagoon for your fishing pleasure. Gorgeous mixed hardwoods, marble countertops and stainless steel appliances. Massive oversized bedrooms and open concept living-room, kitchen and dining area. Enjoy evenings on your veranda watching the sunset over the Maya mountains and across the water.



[Read more on our website](#)

